

Ruby Sensation Sew-Along PART 4

BLOCK ONLY

MATERIALS

BLOCK SIZE

12 1/2" unfinished, 12" finished

RIBBON STAR BLOCK

1/4 yard fabric A
1/4 yard fabric B
1/4 yard fabric C
1/4 yard background



Note: Fabric D is not used in Part Four of the Ruby Sensation Sew-Along.

FULL QUILT

MATERIALS

QUILT SIZE

86" x 86"

QUILT TOP

1 1/4 yards fabric A
1 1/4 yards fabric B
1 1/4 yards fabric C
3 1/4 yards fabric D
5 1/2 yards background fabric
- includes inner border

OUTER BORDER

1 1/2 yards

BINDING

1/2 yard

BACKING

6 1/4 yards - vertical seam(s)
or 2 1/2 yards 108" wide

SAMPLE QUILT

Kona Solids Crimson, Chinese Red,
Tomato, Sienna, White

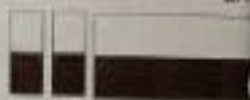
FABRIC KEY



RIBBON STAR

1 cut

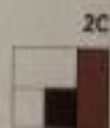
From fabric A, cut (2) 2 1/2" strips across the width of the fabric.



From fabric B, cut (4) 2 1/2" strips across the width of the fabric. Subcut each strip into (8) 2 1/2" x 4 1/2" rectangles for a **total of 32** rectangles.



From fabric C, cut (6) 2 1/2" strips across the width of the fabric. Subcut each strip into 2 1/2" x 6 1/2" rectangles. Each strip will yield 6 rectangles and a **total of 32** rectangles are needed.



Note: Fabric D is not used in Part Four of the Ruby Sensation Sew-Along.

From the background fabric, cut:

- (10) 2 1/2" strips across the width of the fabric. Set 2 strips aside for the moment. Subcut:
 - 4 strips into (16) 2 1/2" squares for a **total of 64** background squares.
 - 4 strips into (8) 2 1/2" x 4 1/2" rectangles for a **total of 32** background rectangles.



2 make corner units

Pair each of the 2 remaining 2 1/2" background strip with a fabric A strip. Sew the pairs together, right sides facing, along 1 long edge of the strips. Open and press the seams toward the darker fabric. Cut each strip set into 2 1/2" increments to **make (32)** 2-patch units. 2A





3A

Sew a 4 1/2" x 2 1/2" background rectangle to the top of the 2-patch unit as shown. Press towards the top. **2B**



3B

Sew a 4 1/2" x 2 1/2" fabric B rectangle to the right side of the unit as shown. Press towards the right. **2C**



Sew a 6 1/2" x 2 1/2" fabric C rectangle to the bottom of the unit as shown to make a corner unit. Press towards the bottom.

Make 32. 2D

Mark each 2 1/2" background square from corner to corner once on the diagonal. **2E**

Place a marked background square on fabric B corner of a corner unit, as shown, right sides facing. Sew on the drawn line. Trim the excess fabric 1/4" away from the sewn seam. Press the seam allowance toward the snowballed corner. **2F**

Place another marked background square on fabric C corner of the corner unit, as shown, right sides facing. Sew on the drawn line. Trim the excess fabric 1/4" away from the sewn seam. Press the seam allowance toward the snowballed corner.

Make 32 snowballed units. 2G

3 block construction

Arrange 4 snowballed units in a 4-patch formation, as shown. Sew the units together in rows. Press the seam toward the right. **Make 2 rows. 3A**

Nest the seams and the rows together, as shown. Press toward the bottom to complete the block. **Make 8. 3B**

Block Size: 12 1/2" unfinished, 12" finished

